

PROGRAMME

Across St Anne's Open House

13–15 June 2025

Unless otherwise stated, activities run across the entire weekend.

ARTWORK

Place Portrait St Annes: Anna Haydock–Wilson

Mixed Media Collaboration with Jo Chalkblack, Caitlin Dawkes & Holly Humphries

Pulp Room Exhibit

PERFORMANCE

Movement Mediation with Anastasia Dahl

Saturday

11am–12pm

Living Plant Sculpture with Anna & Jo

Saturday 14 June

2pm – 4pm

Jo Walter:

This selection of paintings spans the past two years and engages with themes of memory, perception, and emotional response to landscape and place.

Artist Wall in the Cafe Space

TENANT SHOWCASE

Artwork by: Vesper Cain, Joe Tymkow, Jo Walter, Peter Brooks, Beatrice Peppercorn, Alice Voss, Camille Straatman Ellie Shipman, Sarah Currie & Matilda Wright.

Top Floor Gallery

Jessica Akerman: Cork Caryatids

A set of four flag installations commissioned for Cork Midsummer Festival 2021, inspired by the social and environmental histories of Cork's women traders, the Shawlies.

Outside

Helen Grant: Pinwheels

Giant pinwheels spin welcoming everyone to our Open House event. This colourful row of sculptures has a sense of playfulness, fun and celebration that reflects the ethos of the day.

Outside

Ellie Shipman's Between Worlds and Hostile

Between Worlds and Hostile are both relatively new works, exploring themes around access and permission in public space in different ways.

Outside

PERFORMANCES

Buoys Buoys Buoys: The Tudor Pilgrims of St Anne's

A participatory performance featuring the artist and accompanying musicians in a playful procession of woodland creatures on a symbolic St Anne's pilgrimage.

Friday, Starts: 8.30pm

Day School Cohort 2024/2025

A participatory outdoor performance inviting visitors to engage in collective action and reflection. The work explores (in)visible connections between people and place, encouraging contributions to an evolving installation through movement, mark-making, and the sharing of written wishes.

Saturday, Starts: 1.30pm

BS4 Arts Trail

The BS4 Arts Trail is a celebration of creativity across south-east Bristol, showcasing the talents of over 85 incredible artists & craftspeople in Brislington and St Anne's.

15 guest artists will again take over the Mill Room as part of the BS4 Arts Trail. Works range from recycled silver jewellery and festival fashion to printmaking and expressive painting. Browse the artists' stands, have a chat, maybe even buy a gift or a piece of art.

Saturday & Sunday, 11am–4pm



FOOD + DRINK

Cibomatto Canteen

Our Italian cafe is open. Serving hot drinks, gelato, delicious food, both sweet and savoury.

Pura Vida Tacos

Mexican Inspired Street Food Truck

Friday, 7pm–9.30pm & Sunday, 12–2pm

Bricks Bar

Serving a selection of soft and alcoholic drinks.

Friday, 7pm–late

Tasty Ragga

Enjoy Caribbean Street Food vendors delicious pop up menu.

Saturday, 11am–4pm

Alex Does Coffee

Grab a delicious coffee or hot drink

Saturday, 11am–4pm

Garden Folk CIC

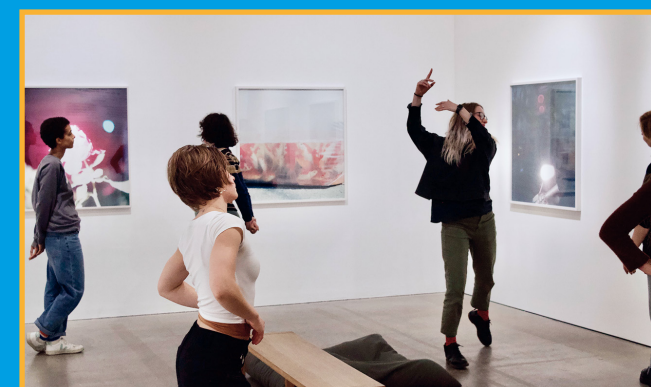
Locally grown salad subscription service. Talk to Alex in our cafe to find out more.

MUSIC

Stiff Pigeons

Stiff Pigeon are longtime Noods Radio residents and event organisers of the odd late night party in Bristol & beyond! Expect a few nice slices of disco and funk'd out grooves.

Friday, 8.30pm–late



See Our Timetable for the weekend for more information about what’s on, when!



ACTIVITIES

Monoprinting

Join Holly, our Youth Programme Producer, and Tom, one of our young creatives to experiment with ink and printmaking. Creating unique prints that reflect your connection to St Anne’s House.
Saturda, 11am–12.30pm

SAH Font Printing: BRIZ

Print your own font using stencils. Designed and created by Ken Borg, the designer behind BRIZ, our community newsletter.
Saturday, 2pm–4pm

Lego Printmaking with Little Leaf Press - Prebook

A fun, hands-on printmaking activity for all ages using Lego Dots. Design your own printing plate, apply ink, and print onto paper and a cotton gift bag using tabletop tools or a Woodzilla press—a perfect creative intro to printmaking.
**Saturday, 11am–12pm
& Sunday, 11am–12pm**

From Ashes with Action Hero - Suitable for ages 10+

Help us build a miniature paper model of Bristol for an upcoming installation at M Shed. Designed by Architecture 00, the project features 2,000 tiny paper buildings—from houses to tower blocks. Drop in to fold, craft, and watch the city come to life, one building at a time.
**Saturday, 11am–3.30pm
& Sunday, 11am–3.30pm**

Community Quilt Making

This workshop is for anybody who wants to tell their story through cloth and make a collaborative community quilt to be displayed at St Anne’s House. Sewing together on the same piece of fabric and celebrating community.
**Saturday, 12pm–2.30pm
& Sunday, 12pm–2.30pm**

FACILITIES/TASTERS

Bristol Community Sauna

Learn more from the Sauna team about the work of Bristol Community Sauna.
Half-price, first come first served drop in Sauna Sessions (bring your cossie!)
Across the weekend

Community Pottery

See inside the pottery studio, talk to the facilitators, and have a go at tile making and wheel throwing.
Saturday and Sunda, 1pm and 2.30pm

MAYKing Space

Bristol based performance producers, MAYK, present a programme of audio works from artists we love from Bristol and beyond. Come on down, grab a bean bag and join us for a day of sonic treats from the wonderful imaginations of some of our creative community.
Saturday, 11am–4pm

Ubuntu Play Therapy

Ubuntu Play and Creative Therapies CIC will be around on Saturday with free crafts and play activities for parents and children.

They will also be opening up their playrooms for people to come and visit and find out more about the why, what, who and how of Play Therapy.
Friday, 7–8pm, Saturday, 11am–4pm

20+ STUDIOS

St Anne’s House is home to a diverse and talented community of over 40 artists working in many different mediums - from painting, performance, sculpture, film, photography to print and textiles.

For Open House you are given an opportunity to explore behind the scenes of the artists’ studio spaces, gaining an insight into their creative processes, seeing and talking about works in progress, and buying directly from the artists.

Studio Holders Include:

Tim Ryan, Karolina Ptaszowska, Ellie Shipman, Emma Gregory, Jonah D Kidd, Alan Pearson, Jessica Akerman, Simone Hesselberg, Anna-Haydock Wilson, Pete Brookes, Fiona Williams, Helen Grant, Sophia Jowett, Day School (Alice Farrington, Alice Voss, Amanda Hall, Beatrice Peppercorn, Bibiana Krauskova, Fatima Rodriguez Montanez, Frank Morris, Honor Vokes, Jessie Blindell, Mary Flower, Matilda Wright, Saffron Murray-Browne, Simone Marconi, Vesper Cain), Venetia Low, Matthew Lintott, Ben Hartley, Johnny Jones, Dawn Giles, Jo Walter, Ingrid Mengdehl, Joe Tymkow, Sadie Spikes, Sarah Currie, Chloe Meineck, Henry Kenyon, Dan Juniper, Camille Straatman, Will Wilford, Delyth Roberts.

Sadie Spikes, Studio 17a:

Sadie will be doing impromptu spoken word in her studios throughout the weekend.

Bog Idol, OOPARTS, Studio 14:

Throughout history people have used personal rituals to help record their memories and experiences with the intention of leaving a legacy and making their voice heard. Write, draw, or symbolise a memory and offer it up to the bog body, with Ben & Johnny in their studio space.



FRIDAY

EXHIBITIONS

7pm - 9pm	Pulp Room	Place Portraits - Anna Haydock Wilson
7pm - Late	Artist Wall	Jo Walter’s Exhibit
7pm - 9pm	Top Floor Gallery	Tenant Showcase

PERFORMANCES

Starts, 8.30pm	Studio 14	Buoys Buoys Buoys: The Tudor Pilgrims of St Anne’s 8.30 start with mask making beforehand in studio
----------------	-----------	---

ACTIVITIES

7pm - 9pm	Studios	Open Studios Take a look at artists studios
8.30pm - Late	Paper Room	DJ Set with Stiff Pigeons

FOOD AND DRINK

7pm - 9pm	Cafe	Cibomatto Canteen Italian Food
7pm - 9pm	Outside	Pura Vida Tacos Mexican Street Food
7pm - late	Cafe	Bricks Bar Alcoholic and soft drinks



SATURDAY

EXHIBITIONS

11am - 4pm	Pulp Room	Place Portraits - Anna Haydock Wilson
11am - 4pm	Artist Wall	Jo Walter’s Exhibit
11am - 4pm	Top Floor Gallery	Tenant Showcase

WORKSHOPS

11am - 12:30pm	Paper Room	Monoprinting
11am - 12pm	Paper Room	Lego Print Making with Little Leaf Print
11am - 3.30pm	Chipper Room	Minature Paper Model Workshops with From Ashes
12pm - 2.30pm	Paper Room	Community Quilt Making
2pm - 4pm	Paper Room	SAH Font Print Making

ACTIVITIES/TASTERS

11am - 4pm	Mill Room	BS4 Arts Trail Explore different craft stalls
11am - 4pm	Studios	Open Studios Take a look at artists studios
11am - 4pm	Mayking Space	MAYK presents audio works Take a moment to pause and listen
11am - 4pm	Sauna	Bristol Community Sauna 3 Half Price Drop In Sessions
1am - 2pm	Pottery Studio	Tile Making Drop In with Community Pottery
2.30pm - 3.30pm	Pottery Studio	Wheel Throwing Drop In with Community Pottery

PERFORMANCES

11am - 12pm	Pulp Room	Movement Mediation with Anastasia Dahl
1.30pm Start	Outside	DaySchool Cohort Performance
2pm - 4pm	Outside	Living Plant Sculpture with Anna & Jo

FOOD AND DRINK

11am - 4pm	Cafe	Cibomatto Conteent Italian Menu
11am - 4pm	Outside	Tasty Ragga Caribbean Street Food
11am - 4pm	Outside	Alex Does Coffee Coffee and Hot Drinks



SUNDAY

EXHIBITIONS

11am - 4pm	Pulp Room	Place Portraits - Anna Haydock Wilson
11am - 4pm	Artist Wall	Jo Walter’s Exhibit
11am - 4pm	Top Floor Gallery	Tenant Showcase

WORKSHOPS

11am - 12pm	Paper Room	Lego Print Making with Little Leaf Print
11am - 3.30pm	Chipper Room	Minature Paper Model Workshops with From Ashes
12pm - 2.30pm	Paper Room	Community Quilt Making

ACTIVITIES/TASTERS

11am - 4pm	Mill Room	BS4 Arts Trail Explore local art and craft stalls
11am - 4pm	Studios	Open Studios Take a look at artists studios
11am - 4pm	Sauna	Bristol Community Sauna 3 Half price drop in sessions
1pm - 2pm	Pottery Studio	Tile Making Drop In with Community Pottery
2.30pm - 3.30pm	Pottery Studio	Wheel Throwing Drop In with Community Pottery

FOOD AND DRINK

11am - 4pm	Cafe	Cibomatto Canteen Italian Menu
------------	------	-----------------------------------



WELCOME TO ST ANNE'S HOUSE

Top Floor

Studios 2

Studio 16
Dawn Giles
Jo Walter
Ingrid Mengdehl

Studio 17
Joe Tymkow

Studio 17a
Sadie Spikes

Studio 18
Sarah Currie

Studio 19
Chloe Meineck

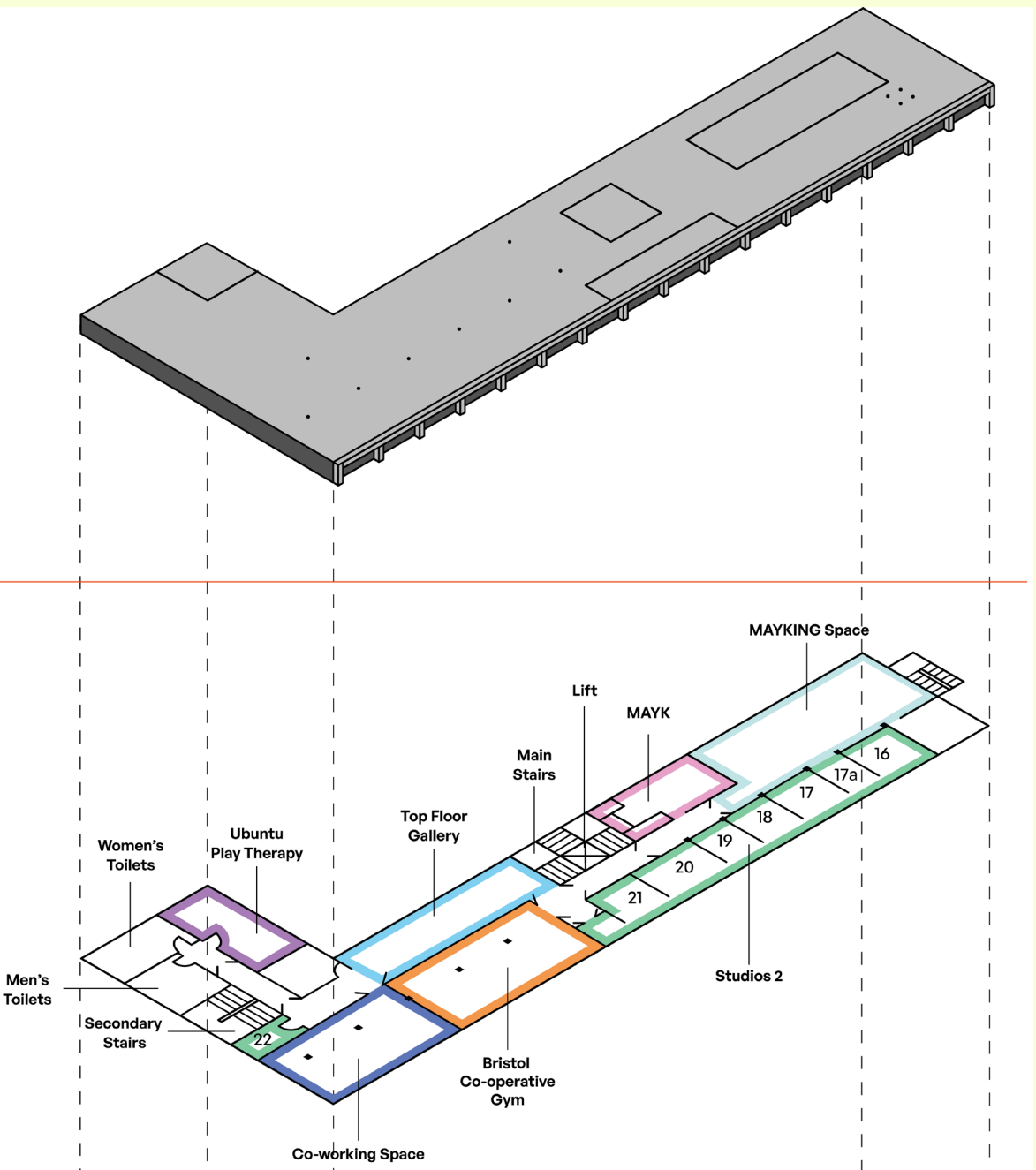
Studio 20
Henry Kenyon
Dan Juniper
Camille Straatman

Studio 21
Will Wilford

Studio 22
Delyth Roberts

Facilities

Bristol Co-operative Gym
Ubuntu Play Therapy
Mayking Space



Middle Floor

Studios 1

Studio 01
Tim Ryan

Studio 02
Karolina Ptaszewska

Studio 03
Ellie Shipman

Studio 04
Emma Gregory

Studio 05
Jonah D Kidd

Studio 06
Alan Pearson

Studio 07
Jessica Akerman

Studio 08
Simone Hesselberg
Anna Haydock-Wilson

Studio 09
Pete Brookes
Leila Meredith
Will Crowne

Studio 10
Fiona Williams
Helen Grant
Sophia Jowett

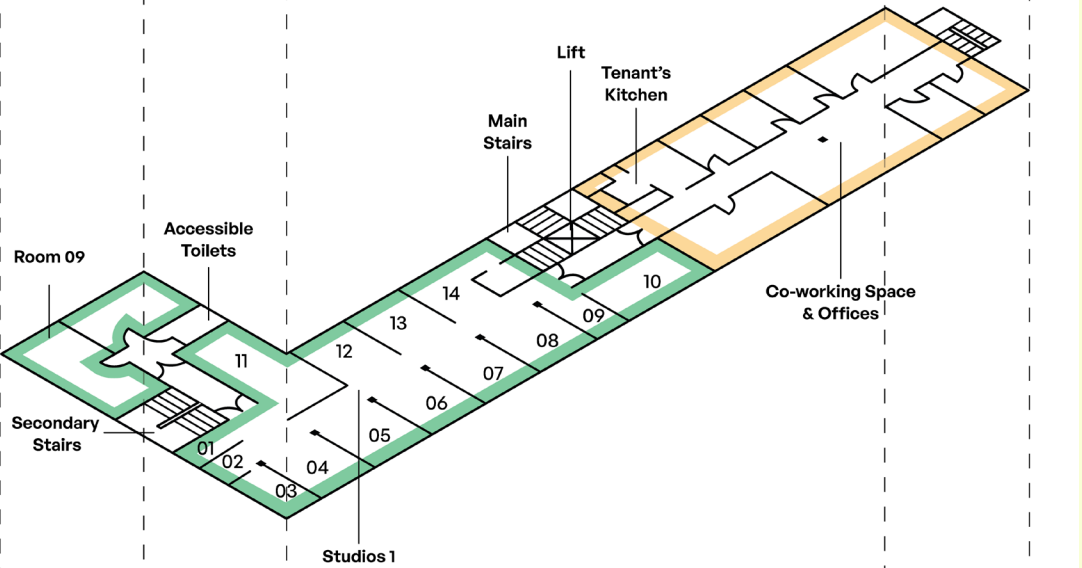
Studio 11
Day School

Studio 12
Venetia Law

Studio 13
Matthew Lintott

Studio 14
Ben Hartley
Buoys Buoys Buoys

Room 09
Frank Morris
Saffron Browne
Catherine White
Amanda Hall
Vesper Cain
Matilda Wright



Ground Floor

Hireable Rooms

Mill Room
Pulp Room
Chipper Room

Facilities

Cibomatto Canteen Cafe
Bristol Community Sauna
Community Pottery

