

# PROGRAMME

Across St Anne's Open House

Friday 14 June, 6pm – 11pm

Saturday 15 June, 11am – 4pm & Sunday 16 June, 11am – 4pm

St Anne's House, Brislington, Bristol BS4 4AB



## EXHIBITIONS

### Studio 55 Presents *Picture Atlas*

Picture Atlas features painting, printmaking, photography, and video artworks inspired by the unfinished research of German art historian Aby Warburg, known as the Bilderatlas Mnemosyne. The exhibition invites viewers to draw connections between original artworks and found images, creating our own interpretation of the Atlas.

### WORKSHOPS

Throughout the weekend, there will be free workshops, including collaging, collaborative animation, and more. See the timetable to find out what's on, and how to book.

### LOST MEMORIES by Gary Thomas

A multi-screen video installation, drawing on the artists' experience of being a carer to his mother who had Alzheimer's Disease. Mixing documentary phone footage with fictional sequences, Gary seeks to convey the texture of lives that revolve around the confusion of dementia and the demands of caring, as well as the moments of clarity and joy that frequently punctuate it.

### WORKSHOPS

There will be writing workshops happening across the weekend to book visit the timetable.

### TENANT SHOWCASE

St Anne's House is home to over 100 artists and makers, a select few tenants will be displaying works in the Top Floor Gallery for viewers to learn more about their work.

## DROP IN ACTIVITIES

### BS4 ARTS TRAIL

Browse over 15 different local artists stalls and crafts as part of the BS4 Art Trail weekend.

### COMMUNITY GARDENING SESSION

Pop by to talk about what could happen in the space outside St Anne's House, or join in for a spot of light gardening and signage making.

### CRAFTY CREATIVE COLLAGE MAKING

Join artist Laura from Colourful Minds and get crafty making rainbows or faces using different collage materials. Suitable for all ages: 2-4 year olds with their grown ups supervision and 5+ year olds independently.

### MAYK PRESENTS AUDIO WORKS

Theatre Producers MAYK will present a programme of audio works from artists they work with. Take a moment to pause, and listen.

### OPEN STUDIOS

Drop in to see the wide range of creatives who are based at St Anne's House. Explore their work, chat to them, and make connections.

### SET WITH SNORDJ

Celebrate the opening Friday night with us, as SNORDJ plays some sounds for us to dance to.

### BRISTOL COMMUNITY SAUNA

Try out our new sauna at St Anne's House. Booking options to be announced soon (follow @bristolcommunitysauna) for updates.

## FOOD + DRINK

### CEYLON & BEYOND

Enjoy a delicious Sri Lankan street food pop up menu. Vegan options available. [Menu here.](#)

### CIBOMATTO

Say hey to Cibomatto Kitchen and taste their homemade pizzetta and ice cream.

### BRICKS BAR

Serving alcoholic, soft, and hot drinks.

## TRAVEL

### FERRY

Ferry journeys to and from Netham Lock to the Centre will be available over the weekend. *Book from the timetable.*

### BIKE

We have bike racks to park up.

### BUS

The 36 bus drops off across the road.

### CAR

Due to the size of this event, we encourage visitors not to drive as parking will be limited. There are 4 dedicated accessibility parking bays.





# FRIDAY TIMETABLE



## EXHIBITIONS

|            |                   |  |
|------------|-------------------|--|
| 6pm - 11pm | Pulp Room         | <b>Studio 55</b> presents <i>Picture Atlas</i> |
| 6pm - 11pm | Light Studio      | <b>Lost Memories</b> with Gary Thomas          |
| 6pm - 11pm | Top Floor Gallery | <b>Tenant Showcase</b>                         |

## ACTIVITIES

|            |               |   |
|------------|---------------|---|
| 6pm - 8pm  | Paper Room    | <b>Flushrooms</b><br>Stall selling mushrooms grown at SAH             |
| 6pm - 9pm  | Studios       | <b>Open Studios</b><br>Take a look at artists studios                 |
| 6pm - 9pm  | Mayking Space | <b>MAYK</b> presents audio works<br>Take a moment to pause and listen |
| 9pm - 11pm | Paper Room    | <b>Set with snorDJ</b>  |

## FOOD AND DRINK

|            |         |  |
|------------|---------|--|
| 6pm - 9pm  | Outside | <b>Ceylon &amp; Beyond</b><br>Sri Lankan Street Food |
| 6pm - 11pm | Kitchen | <b>Bricks Bar</b><br>Selling a variety of drinks     |

## FERRY TRIPS

|                 |  |
|-----------------|--|
| 5.30pm - 6.15pm | Centre to Netham Lock ( <a href="#">book</a> ) |
| 8.15pm - 9.30pm | Netham Lock to Centre ( <a href="#">book</a> ) |



# SATURDAY TIMETABLE



## EXHIBITIONS

|            |                   |  |
|------------|-------------------|--|
| 11am - 4pm | Pulp Room         | <b>Studio 55</b> presents <i>Picture Atlas</i> |
| 11am - 4pm | Light Studio      | <b>Lost Memories</b> with Gary Thomas          |
| 11am - 4pm | Top Floor Gallery | <b>Tenant Showcase</b>                         |

## WORKSHOPS

|                   |              |  |
|-------------------|--------------|--|
| 11am - 12:30pm    | Pulp Room    | <b>Ed Hancox - Film Workshop</b> (Book on <a href="#">Headfirst</a> )            |
| 11am - 4pm        | Pulp Room    | <b>Simon collaborative - Flipbook Animation</b> (Drop in)                        |
| 11.30am - 12.30pm | Light Studio | <b>Lost Memories - Writing for Respite</b> (Book on <a href="#">Eventbrite</a> ) |
| 2pm - 4pm         | Pulp Room    | <b>Hev Christie - Moving Parts</b> (Book on <a href="#">Headfirst</a> )          |
| 2pm - 3pm         | Chipper Room | <b>Lost Memories - Writing for Respite</b> (Book on <a href="#">Eventbrite</a> ) |

## DROP IN ACTIVITIES

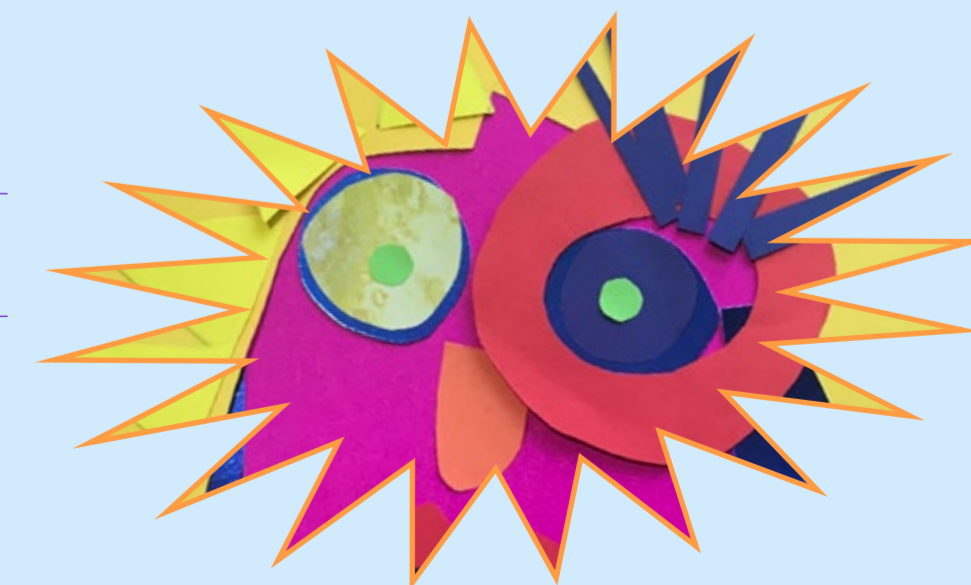
|                |               |  |
|----------------|---------------|--|
| 11am - 12.30pm | Paper Room    | <b>Collage Rainbows with Colourful Minds</b><br>Get crafty making rainbows using different collage materials |
| 11am - 2pm     | Front Garden  | <b>Community Gardening Session</b>   |
| 11am - 4pm     | Mill Room     | <b>BS4 Arts Trail</b><br>Browse different craft stalls   |
| 11am - 4pm     | Studios       | <b>Open Studios</b><br>Explore artists studios   |
| 11am - 4pm     | Mayking Space | <b>MAYK</b> presents audio works<br>Take a moment to pause and listen  |
| 11am - 4pm     | Paper Room    | <b>Flushrooms</b><br>Stall selling mushrooms grown at SAH  |
| 2pm - 3.30pm   | Paper Room    | <b>Collage Faces with Colourful Minds</b><br>Get crafty making faces using different collage materials       |

## FOOD AND DRINK

|            |           |  |
|------------|-----------|--|
| 11am - 4pm | Outside   | <b>Ceylon &amp; Beyond</b><br>Sri Lankan Street Food |
| 11am - 4pm | Reception | <b>Cibomatto</b><br>Pizzetta and ice cream           |
| 11am - 4pm | Kitchen   | <b>Bricks Bar</b><br>Selling a variety of drinks     |

## FERRY TRIPS

|                |  |
|----------------|--|
| 11am - 11.45am | Centre to Netham Lock ( <a href="#">book</a> ) |
|----------------|--|





# SUNDAY TIMETABLE

## EXHIBITIONS

|            |                   |   |
|------------|-------------------|---|
| 11am - 4pm | Pulp Room         | Studio 55 presents <i>Picture Atlas</i> |
| 11am - 4pm | Light Studio      | Lost Memories with Gary Thomas          |
| 11am - 4pm | Top Floor Gallery | Tenant Showcase                         |

## WORKSHOPS

|                   |              |  |
|-------------------|--------------|--|
| 11am - 4pm        | Pulp Room    | Andrew Wilson - <i>Picture Atlas Collage</i> (Drop in)                           |
| 11.30am - 12.30pm | Light Studio | Lost Memories - <i>Writing for Respite</i> (Book on <a href="#">Eventbrite</a> ) |
| 1pm - 3pm         | Pulp Room    | Jess Cox - <i>Art therapy workshop</i> (Book on <a href="#">Headfirst</a> )      |
| 2pm - 3pm         | Chipper Room | Lost Memories - <i>Writing for Respite</i> (Book on <a href="#">Eventbrite</a> ) |

## DROP IN ACTIVITIES

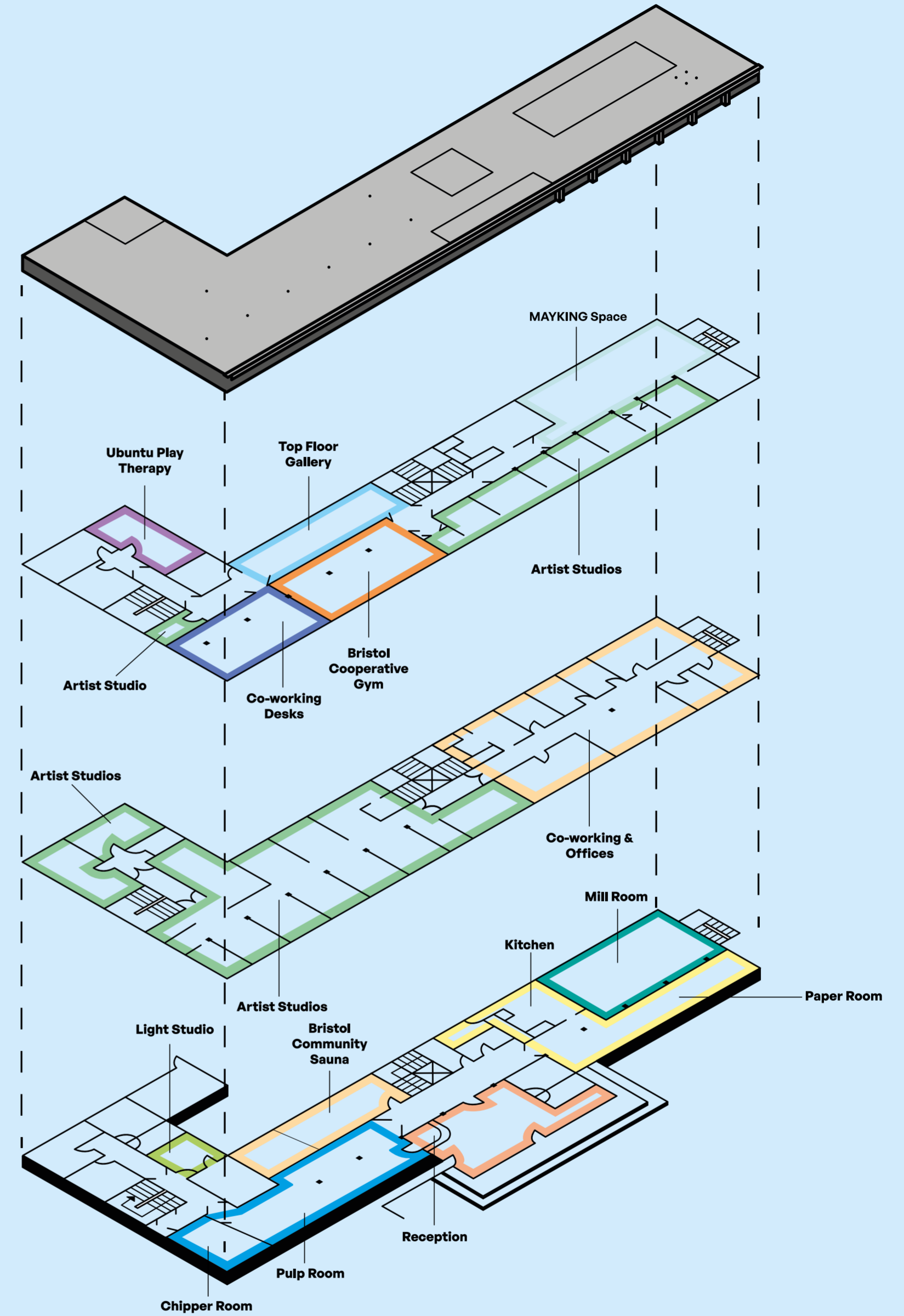
|                |               |  |
|----------------|---------------|--|
| 11am - 12.30pm | Paper Room    | <b>Collage Rainbows with Colourful Minds</b><br>Get crafty making rainbows using different collage materials |
| 11am - 4pm     | Mill Room     | <b>BS4 Arts Trail</b><br>Browse different craft stalls   |
| 11am - 4pm     | Studios       | <b>Open Studios</b><br>Explore artists studios   |
| 11am - 4pm     | Mayking Space | <b>MAYK presents audio works</b><br>Take a moment to pause and listen  |
| 11am - 4pm     | Paper Room    | <b>Flushrooms</b><br>Stall selling mushrooms grown at SAH  |
| 2pm - 3.30pm   | Paper Room    | <b>Collage Faces with Colourful Minds</b><br>Make faces using different collage materials                    |

## FOOD AND DRINK

|            |           |  |
|------------|-----------|--|
| 11am - 4pm | Outside   | <b>Ceylon &amp; Beyond</b><br>Sri Lankan Street Food |
| 11am - 4pm | Reception | <b>Cibomatto</b><br>Pizzetta and ice cream           |
| 11am - 4pm | Kitchen   | <b>Bricks Bar</b><br>Selling a variety of drinks     |

## FERRY TRIPS

|                 |  |
|-----------------|--|
| 3.15pm - 4.30pm | Netham Lock to Centre ( <a href="#">book</a> ) |
|-----------------|--|



# ST ANNE'S HOUSE

## ACCESSIBILITY

St Anne's House, BS4 4AB  
The building has accessibility ramps, parking and accessible toilet.  
If you have any access requirements please get in touch [stannes@bricksbristol.org](mailto:stannes@bricksbristol.org), 07709 264 201.