

**ISSUE 2
SPRING 2023**

**A COMMUNITY NEWSLETTER
FOR BRISLINGTON**

FEATURING

**THINGS TO DO IN BRISLINGTON THIS SPRING
ADVENTURES DOWN THE BROOK
JONATHAN KELHAM: SUPER DUPER ST ANNE'S F.C.
FILM REVIEWS
INTERVIEW: FRIENDS OF BRISLINGTON BROOK**

FREE



INDEX

- 3 Local say
- 4 Local recommendation
- 5 Local curiosity
- 6 What's on
- 8 Local curiosity
- 9 Community in focus
- 10 Local interview
- 11 Support

Editorial

Bricks Newsletter Volunteer Team

Design

Studio Mothership

Print

Taylor Brothers

Special thanks to

The volunteers who helped make decisions, create content, distribute, and be part of the BRIZ team.

Cover Artwork

Supported by

Bristol City Council
Quartet Community Foundation



ST ANNE'S HOUSE



Quartet Community Foundation

WELCOME LETTER

Dear Reader,

The world's waking up a little bit and we are delighted to share the Spring issue of BRIZ, the new community newsletter for all things Brislington.

In this issue you will find things such as a local interview written by resident Cheryl Warner with Andy Coogan from FoBB, a few recommendations by a young film reviewer Nathan Hardie, and a journey through the valley with local resident's questions to discover a virtual gallery and a chance to make a wish.

This issue has a colouring in sheet and merch giveaway by St Anne's artist, Jonathan Kelham for his fictional football team Super Duper St Anne's F.C. Finally, as with every issue, we'll be sharing listings of one-off and on-going free and affordable activities in the Brislington area for you to check out!

This is the second of four newsletters which we have been funded to put together alongside the local community of Brislington. For this Spring issue, the content was chosen, written, and approved by members of the BRIZ editorial volunteer team.

BRIZ will be distributed quarterly into homes in the area as well as at local hubs to collect from.

We loved hearing from so many of you following our first issue! Thank you for the words of encouragement and support.

If you'd like to contribute in any way or just send us your thoughts, don't hesitate to get in touch! Contact details on the back cover.

Best,

The BRIZ Editorial team

OUR PLACE AND OUR VALLEY

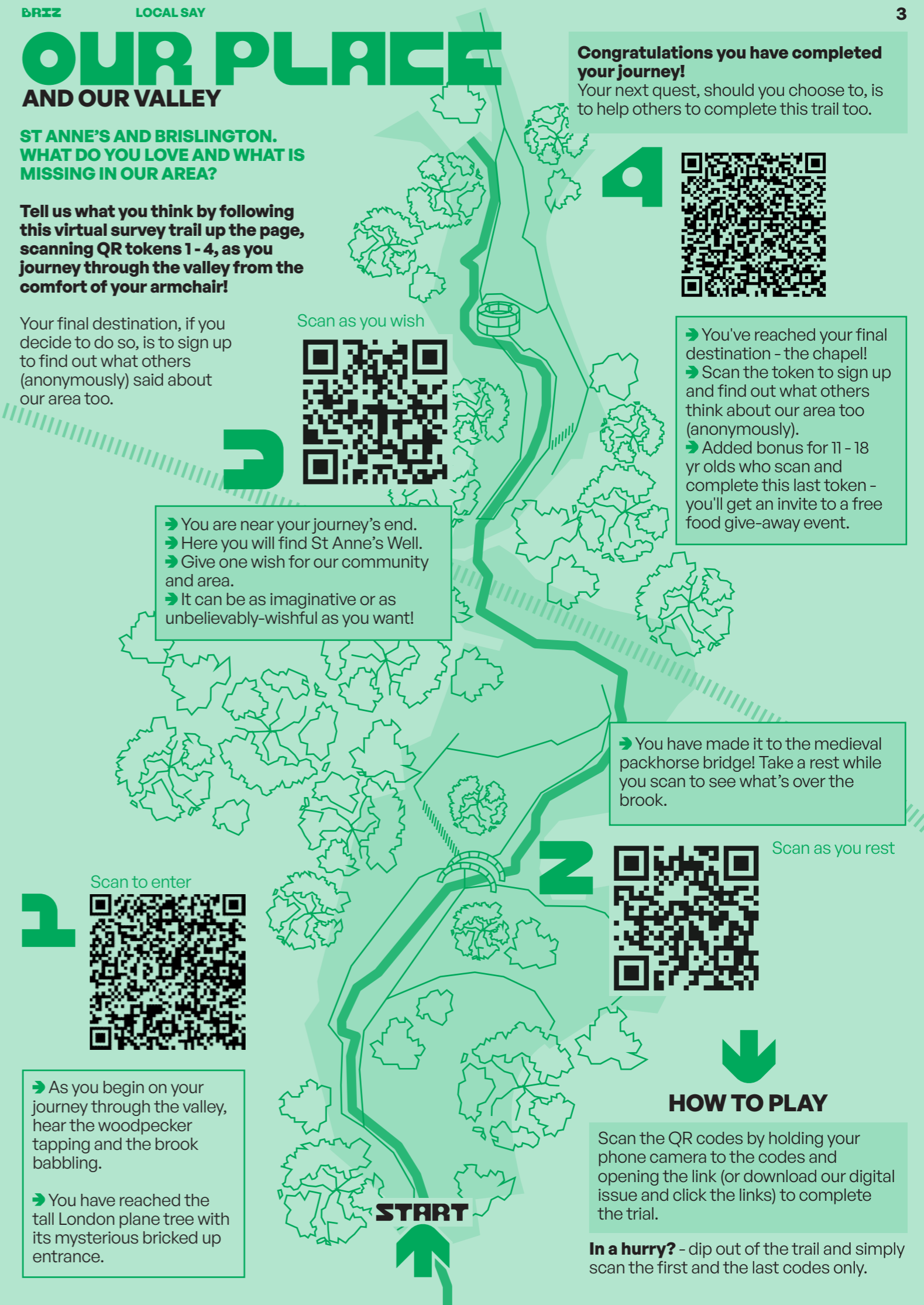
ST ANNE'S AND BRISLINGTON. WHAT DO YOU LOVE AND WHAT IS MISSING IN OUR AREA?

Tell us what you think by following this virtual survey trail up the page, scanning QR tokens 1 - 4, as you journey through the valley from the comfort of your armchair!

Your final destination, if you decide to do so, is to sign up to find out what others (anonymously) said about our area too.

Congratulations you have completed your journey!

Your next quest, should you choose to, is to help others to complete this trail too.



➔ You are near your journey's end.
 ➔ Here you will find St Anne's Well.
 ➔ Give one wish for our community and area.
 ➔ It can be as imaginative or as unbelievably-wishful as you want!

➔ You've reached your final destination - the chapel!
 ➔ Scan the token to sign up and find out what others think about our area too (anonymously).
 ➔ Added bonus for 11 - 18 yr olds who scan and complete this last token - you'll get an invite to a free food give-away event.

➔ You have made it to the medieval packhorse bridge! Take a rest while you scan to see what's over the brook.

➔ Scan to enter

➔ As you begin on your journey through the valley, hear the woodpecker tapping and the brook babbling.

➔ You have reached the tall London plane tree with its mysterious bricked up entrance.

➔ Scan as you rest

HOW TO PLAY

Scan the QR codes by holding your phone camera to the codes and opening the link (or download our digital issue and click the links) to complete the trial.

In a hurry? - dip out of the trail and simply scan the first and the last codes only.

St Anne's Community Living Room Update

The Living Room has been open since Oct 2022 during the colder seasons for you to come in, relax, and enjoy some free drinks and food.

Now that we enter Spring, The Living Room will be open for set groups and times, including: Morning Meet-ups, Shared Reading, and Mini Milk (see listings pg 6 + 7 for details).

Fill in our survey to share your thoughts on the current and future use of the community space?

We'd love to hear your ideas!
georgia@bricksbristol.org



Photo by Ruby Turner

NEWS

FILM

Nathan Hardie is a film critic and scriptwriter born in 1996 and raised in Brislington. For more in-depth reviews and recommendations, visit his website hardiewrites.com and follow him on socials @hardiewrites.

Missing

Showcase Avon Meads

Release Date 21 April 2023, 12A, 1 hr 51 mins.

Aneesh Chaganty broke new ground in 2018 with his feature debut Searching: the story of a dad (John Cho) investigating his daughter's disappearance (Michelle La) told entirely through computer screens. Full of twists, turns and a stellar lead performance, it deservedly earned a follow-up with Missing. New story plus new directors in a similar format could be another successful entry in this winning formula.

Polite Society

Showcase Avon Meads

Release Date: 28 April 2023, 12A, 1 hr 43 mins.

Following the critical acclaim of her Channel 4 sitcom We Are Lady Parts, Nida Manzoor's first foray into film looks to be a promising one. Polite Society is a comedy-heist movie about two British-Pakistani sisters: Ria, an aspiring stuntwoman and Leah, who's dropping out of art school to get married. An over-the-top, fun romp, Polite Society puts a new spin on the martial arts genre.

Storyville: A Bunch of Amateurs

BBC iPlayer

Available until January 2024 on BBC iPlayer, Contains some strong language, 1 hr 35 mins.

Established in 1932, Bradford Movie Makers is one of the longest-running filmmaking clubs in the UK. However, with an ageing group and dwindling finances, their remake of Oklahoma might be the last project they release. Fighting against all odds, A Bunch of Amateurs is a hilarious documentary that represents a heartwarming testament to cinema.

ADVERTISEMENT

SMALL GROUP POTTERY COURSES IN ST ANNE'S

On each course we explore a different making and decorating technique, with plenty of room to try out your own ideas. All levels are welcome.

5 week ceramic courses: £125.
Next course starts in June.

Sat workshops: £35.
1 on 1 / 2 on 1 Potter Wheel sessions: from £45
Enquire for these and more services.



WENDY CALDER CERAMICS

62 Arlington Road, St. Anne's, Bristol BS4 4AJ

WendyCalderCeramics.com/courses
wendyanncalder@hotmail.com

SUPER DUPER

JONATHAN KELHAM SUPER DUPER ST ANNE'S F.C.

Last year artist Jonathan Kelham kicked-off a project about the rise of a new fictional football team; *Super Duper St. Anne's F.C.*, to analyse the obstacles and speculate on the benefits of a local community team back on the hallowed turf.

This season see's the launch of a *New & Free Limited Edition Super Duper St. Anne's F.C. Supporters Pack*, a must for every St. Anne's fanatic.

What cool colours do you think the St. Anne's merchandise would be? Find some small hands to colour them in! & Can you find all 10 Ref. Whistles? ↪

A POEM WRITTEN BY LOCAL WRITER: STEVE POTH.

Childrens' Questions

Why is the sky so blue?
Why isn't it another hue?

When metals rust: iron, red; copper, green.
Why not the same colour be seen?

Why is it, that when we get cut, our blood is red;
Yet with plants it is often white, yet on this nothing is said?

How can lightning jump from cloud to ground;
Yet electricity can't jump through a cable and makes no thunder sound?

How does a tortoise know when it's spring?
Yet it has no alarm clock to make a ring?

Why is it that when Dad says it's time for bed;
If I offer him sweets, a delay is agreed with a nod of his head?

Why is it when I'm really naughty,
Mum may get really haughty?
She puts me through the grill,
But she loves me still.



CAME THE SUPPORTERS PACK

ST. ANNE'S F.C. - FOREVER

TAI CHI

Mondays
1pm - 2pm
£4
01179 514 745

BINGO

Wednesdays
1.30pm - 3.30pm
01179 723 066

MARTIAL ARTS

Variety of weekly classes.
To find out more visit:
dragonclawmartialarts.com
07837 988 762

Salisbury Rd,
BS4 4EL

FLOW YOGA

Tuesdays
7.15pm - 8.15pm
£8
07717 872 312

PILATES

Wednesdays
10am - 11am
Fridays
9.15am - 10.15am
£7
07717 872 312

STORY STARS

Sensory story adventures for babies

Tuesdays
8.30am - 1pm
storystars@gmail.com
01179 094 235

LUNCH CLUB

Every 3rd Wednesday of the month
12pm
07825 278 045

Hampstead Rd,
Brislington Village,
BS4 3HN

ST CHRISTOPHER'S CHURCH

BRISLINGTON ART GROUP

Wednesdays, weekly
1.30pm - 4pm
£5
07745 343 390

Brookside Rd,
BS4 4JS

BRISLINGTON GUITAR CLUB

All experience levels welcome

Mondays
8pm - 10pm

(Skittle Alley)
Sandy Park
BS4 3PE

BRISLINGTON AND ST ANNE'S HISTORY GROUP

Last Thursday of the month
7.30pm - 10pm
01179 710 523

REPAIR CAFÉ

3rd Saturday of every month
10am - 12pm

Sandy Park Rd, BS4 3PG

CHANGES BRISTOL PEERS SUPPORT GROUP

Thursdays
1pm - 3pm
01179 411 123
changesbristol.org.uk

TEA CLUB

Wednesdays
2pm - 3pm
01179 710 523

ST OUTHERBERT'S CHURCH

OPEN HOUSE

Explore the tenant's work and studio spaces!

02 June
6pm - 10pm
03 - 04 June
11am - 5pm

OOPARTS

Duo exhibition by Ben Hartley & Buoy Buoy Buoy

02 June
6pm - 10pm
03 - 04 June
11pm - 5pm

MINI MILK

Breastfeeding Support Group

Mondays, weekly
11am - 12pm
07709 264 201

BRISTOL COOPERATIVE GYM

Sessions weekly

Pay-what-you-can book via website
bristolcooperativegym.org

BRUHAHA / CICCIO'S KITCHEN

Pop-up tap room and food

04 May
5pm - 10pm

SHARED READING

Wednesdays, weekly
10.30am - 12pm
07709 264 201

MORNING MEET-UPS

Thursdays, weekly
10am - 12pm
07709 264 201

CREATIVITY FOR WELLBEING

Mondays
11am - 1pm

VINYASA FLOW YOGA

Tuesdays
6pm - 7pm
£8.50

ACTIVE RELAXATION YOGA

Thursdays
6.30pm - 7.15pm
£8.50

St Anne's Rd,
St Anne's,
BS4 4AB
07709 264 201

ST ANNE'S HOUSE

THINGS TO DO IN BRISLINGTON



FREE* AND AFFORDABLE ACTIVITIES IN BRISLINGTON

- UNDER 5s
- FOR 50+
- FOR 18+

*If no price is stated the listing is free.

ST ANNE'S PARK

STORIES AND CRAFTS

Join Friends of St Anne's Park for some after school stories and crafts.

St Anne's Story Circle
28 April, 26 May
3:30pm - 5pm

COMMUNITY PICNIC

Bring a picnic & celebrate summer in the park

9 July
12pm - 2pm

friendsofstannespark@gmail.com

BRIS HILL ART CLUB AT BRISLINGTON VILLAGE MARKET

Make prints, plant spring bulbs and come on a nature trail.

22 April
12pm - 3pm
anna@artwithinthecracks.org
Brislington Hill Concourse
BS4 5BE

MAY FAIR

Arnos Vale Cemetery
30 April
10am - 3pm
Arnosvale.org.uk
BS4 3EW

TALK CLUB

A place where men can share what's been happening in their week.

Tuesdays
7.30pm - 9.30pm
Free

hello@talkclub.org

Bath Rd,
BS4 3HQ

ARNOS MANOR HOTEL

TAI CHI

Mondays
2.15pm - 3.15pm
£4
07718 745 815

FOOD CLUB

Tuesdays
12.30pm - 2.30pm

Sign up to receive a range of fresh veg, meat, and cupboard essentials worth £10-15

£1 joining fee + £3.50 per food box.
01173 534 276

ST PETER'S CHURCH HALL

Allison Rd,
Broomhill,
BS4 4NZ

ST ANNE'S PARK

STORIES AND CRAFTS

Join Friends of St Anne's Park for some after school stories and crafts.

St Anne's Story Circle
28 April, 26 May
3:30pm - 5pm

COMMUNITY PICNIC

Bring a picnic & celebrate summer in the park

9 July
12pm - 2pm

friendsofstannespark@gmail.com

BRIS HILL ART CLUB AT BRISLINGTON VILLAGE MARKET

Make prints, plant spring bulbs and come on a nature trail.

22 April
12pm - 3pm
anna@artwithinthecracks.org
Brislington Hill Concourse
BS4 5BE

MAY FAIR

Arnos Vale Cemetery
30 April
10am - 3pm
Arnosvale.org.uk
BS4 3EW

TALK CLUB

A place where men can share what's been happening in their week.

Tuesdays
7.30pm - 9.30pm
Free

hello@talkclub.org

Bath Rd,
BS4 3HQ

MARKETS

HOLYMEAD HUB - HOLYMEAD JUNIOR SCHOOL

NEW AGE KURLING

Tuesdays
1pm - 2.30pm
£3 (first session free)
07851255018

Hollywood Rd,
BS4 4LE

NIGHTINGALE VALLEY WOODS

NATURE BODY

Yoga and dancing

Wednesdays
10.30am - 11.30am
Wicklea Academy entrance
07482 930 330

ACROSS BRISLINGTON

BRISTOL WALKFEST

Friends of Eastwood Farm host a guided walk. Meeting at Whitmore Ave entrance.

10 May **11am**
bristolwalkfest.com

BIG GREEN WEEK

Activities happening across different venues in Brislington.

10 - 18 June
greatbiggreenweek.com

BS4 ARTS TRIAL

The first ever trial across different areas in BS4.

24 - 25 June
bs4artstrail.co.uk

SOUP ER NATURAL

Free soup followed by a free foraging walk with Andy Hamilton.

17 - 18 May **12pm**
Must book via eventbrite:
tinyurl.com/wildsoup2

BS4 WELLBEING WALKS

Different locations each week.

Mondays
10am - 11am
Facebook:
BS4 Wellbeing Walks

This is just a handful of activities happening in the area, make sure you call each venue and ask for more info on classes available.

YOUR ACTIVITIES IN THE NEXT ISSUE OF BRIZ:

If you have free or affordable activities in Brislington, let us know to be listed in the next issue! This is the first attempt to collect as much info as possible, if you've not been added please let us know.

By emailing briz@bricksbristol.org or calling **07709 264 201**

Free Limited Edition Super Duper St. Anne's F.C. Supporters Pack.

Packs contains:

- 1x St. Anne's Forever 2023 Scarf
- 1x St. Anne's Forever Pink Pencil
- 1x St. Anne's Fridge Magnet Pack [3 designs]
- 1x Super Duper Window Sticker
- 1x Screen-Printed Clothes Patch
- 5 x Super Circular Paper Stickers
- 2 x Signed Limited Edition Prints
- 1x Customised Membership Card.
- 1x St. Anne's F.C. Bookmark
- 2 x St. Anne's Oval Badges



SUPER DUPER CLUB SHOP

Visit the official club shop to get your Free Limited Edition Super Duper St Anne's F.C. Supporters Pack and be ready for the new season!

tinyurl.com/StAnnesSuperDuperShop

BEFORE THE CLUB



COMMUNITY & VOLUNTEERING

Find out about the different ways you can get involved in your local community.



NATURAL GRIDS

Building a network of pocket nature reserves for pollinators, one meter square at a time.

Natural Grids is a project run by local volunteers working to turn unused pockets of space in BS4 into flowering micro meadows for pollinators. Be it grass verges on the roadside or small patches of cut grass in public spaces, we want to help wildlife by creating habitat spaces in our urban environment. Most pollinators are not able to travel far, making it especially important to provide local sources dotted around for them to visit.

Get involved!
Find us on Instagram or Facebook (@naturalgrids) or get in touch at: naturalgrids@gmail.com.

Since our launch in 2022, we have created four small nature reserves in four different places in Brislington, each measuring one square meter. To create these "grids", we use native wildflowers to provide pollinators and insects with food, shelter, and places to breed.

To maintain and hopefully expand our project, we are looking for local residents who would like to contribute. This could involve raising seedlings for a few weeks in preparation for planting out later this spring, becoming a "ranger" for an existing grid, or even helping to create new ones.

BS4 ARTS TRAIL

The first ever BS4 Arts Trail is taking place on 24th-25th June 2023!

We welcome professional and non-professional artists, craftspeople, performers and makers from across the local community to apply to share their work and open their studio spaces, homes and/or gardens to celebrate the wonderful creativity of our area.

If you haven't got your own space to open, or you're from outside BS4, we can offer a place in one of our community venues.

Registration is now open and the deadline for applications is 14th May 2023.

Bs4artstrail.co.uk

For more volunteer opportunities please see our previous issue, which you can download from our website: bricksbristol.org/2022/12/briz-newsletter

ADVERTISEMENT

CARNHILL WORKSHOP

LANDSCAPE GARDENING AND CARPENTRY, BRISLINGTON.

Thinking about a new garden? An outdoor seating area, decking or patio? Raised planters for plants and veggies?

I offer a complete design and build service for all kinds of projects and scales - search for Carnhill Workshop on facebook, instagram, nextdoor to see previous work.



Carnhill workshop provides a bespoke design and build service for home and garden.



Email: carnhillworkshop@gmail.com
Phone: Sam on 07549254370

DISCOVER

FRIENDS OF BRISLINGTON BROOK

We spoke to Andy Coogan, Chair of Friends of Brislington Brook, a community group dedicated to making Nightingale Valley and St Anne's Woods a better place to be.

What is something readers might not know about Nightingale Valley or the woods?

There used to be a house in St Anne's Woods! It was by the entrance near Kingfisher School and was probably a farmhouse. I found this out on the Know Your Place website which allows you to explore your neighbourhood through old maps.



What's your favourite bit of Nightingale Valley or St Anne's Woods?

Strangely enough, the tar barrels! Located on the Hill Lawn side of Nightingale Valley, there are some barrels that no one really knows how they got there. So, it presents an intellectual challenge to find out! There's all kinds of stories, one being that the American military came to Brislington in 1943 to repair bomb-damaged roads, but had to depart quickly for the D-Day Landings so the barrels were left behind. Or it could be from a local paint factory as aerial shots from the mid 1930s suggest the barrels were there then. I find the detective work fascinating!



Tell me about FOBB. How did it get started and what does it do now?

Friends of Brislington Brook was started back in 2011 by Rowan Matthiessen. It grew out of a project called Discover Brislington Brook, which aimed to help people find out about the brook, Nightingale Valley, and St Anne's Woods through walks, talks and events.

Friends of Brislington Brook now run community events; from history walks, and litter picks, to bat walks, and even owl prowls. Anyone can get involved.

Do you have a best memory of a FOBB event?

The pageants that we held for a few years were always fun. These were an organised walk from the Pilgrim Inn pub through to the well in St Anne's Woods to celebrate St Anne's Day. Everyone dressed up in medieval clothing and there was storytelling along the route.

What's the future for FOBB?

To keep going as we are! We'd love more volunteers so please get in touch if you'd like to get involved, info. fobb@gmail.com or search on Facebook for Friends of Brislington Brook.●

Interviewee and writer:
Cheryl Warner

BRIZ COMMUNITY POT

We are delighted to share the projects that received some funding from the community pot for activities, events, and community centred projects in Brislington. Thank you to all those who submitted ideas.

- ➔ Save our Avon Festival
- ➔ Maternal Journal Group
- ➔ Sandy Park Tea Club
- ➔ St Anne's Monday Club
- ➔ St Anne's Park Mural
- ➔ Soup Er Natural
- ➔ BS4 Art Trail

To see more about each project please visit here:



SUPPORT & ADVICE

A guide of key services which provide free support and advice.

➔ WE ARE BRISTOL HELPLINE

Free helpline to get information and advice about the cost of living crisis.

Monday to Friday
8.30am - 5pm

0800 694 0184

➔ EAST BRISTOL FOOD BANK

Emergency food parcels are available for those in need (agency referral voucher needed). Deliveries on Fridays to Brislington or visit: St Barnabas Church, Daventry Road BS4 1DQ Wednesdays 12.30pm - 2pm

0808 208 2138

www.eastbristolfoodbank.org.uk/get-help

➔ BRISTOL LAW CENTRE

Free legal phone advice, and casework. Specialists in housing & homelessness, benefits, mental health, employment and discrimination.

Mon - Fri
9.30am - 4.30pm

0117 924 8662

mail@bristollawcentre.org.uk

➔ CITIZENS ADVICE BRISTOL

Specialist advice on Housing, Disability, Money Advice, Welfare Benefits, Legal Rota, Employment

0808 278 7957

www.bristolcab.org.uk

➔ HOUSING MATTERS BRISTOL

A housing advice service and can provide free, independent, and specialist advice on housing-related matters to anyone in need, in Bristol and the surrounding area.

0117 935 1260

advice@housingmatters.org.uk
www.housingmatters.org.uk

➔ SHELTER

For urgent housing advice call Shelter's emergency helpline on:

0808 800 4444

www.england.shelter.org.uk

➔ THE SAMARITANS

Whatever you're going through, you can call Samaritans any time, from any phone for free. Open 24 hours a day, 365 days a year.

116 123

www.samaritans.org

➔ NHS MENTAL HEALTH TALKING THERAPIES

Free and confidential service, for anyone aged 16 or over, to help people overcome negative feelings and get more from their lives.

0333 200 1893

bit.ly/TalkingTherapiesBNSSG

➔ OFF THE RECORD BRISTOL

A mental health social movement by and for young people aged 11-25

0808 808 9120 (Enquiry only)

Mon - Fri 2pm - 5pm
hello@otrbristol.org.uk
www.otrbristol.org.uk

➔ AGE UK BRISTOL

Providing a number of services for older adults, including advice, social and community groups, befriending, and practical support. Advice is also available for carers and family.

0117 929 7537

www.ageuk.org.uk/bristol

➔ CARERS SUPPORT CENTRE BRISTOL

Provides support, information and advice to carers of any age living in the Bristol and South Gloucestershire.

0117 965 2200

www.carerssupportcentre.org.uk

➔ WECIL

WECIL is a user led organisation supporting Disabled people to live the life they choose through support and advice.

0117 947 9911

wecil.org.uk

➔ SWITCHBOARD

Switchboard provide information, support and a referral service for LGBT+ people - and anyone considering issues around their sexuality and/or gender identity. Helpline open 10:00-22:00 every day

0800 0119 100

hello@switchboard.lgbt
switchboard.lgbt/

GRAB A JOB

FLU AND COVID 19 VACCINATIONS

Visit:

bnssghealthiertogether.org.uk/covid-flu-vaccination
or contact your local GP for more advice and information.

S

BRIZ



Open House at St Anne's House

Friday 02 June,
6pm - 10pm
Sat 03 & Sun 04 June,
11am - 5pm

This June we are opening the doors to St Anne's House for a weekend of open studios, activities, workshops, food, and exhibitions for all ages.

The three days will be a chance to see tenants' workspaces and creativity, including Bristol-based painters, printmakers, photographers, makers, community groups, and thinkers.


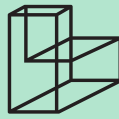
Join us for creative workshops, an exhibition, food, drink, taster sessions, and community fun!

Drop in anytime during opening hours.

During the Open House there will be a duo exhibition by Ben Hartley and Buoy Buoy Buoy.

The exhibition *Out of Place Artefacts* is about objects, how they act as vessels for stories bestowed on them through folk tradition and community play.

Explore how the past becomes shrouded by mystery and where the legends and stories form! Open during the same hours as Open House.

		St Anne's House BS4 4AB Bristol	stannes@bricksbristol.org 07709 264 201	@bricksbristol www.bricksbristol.org
---	---	------------------------------------	--	---

BRIZ GET INVOLVED IN THE NEXT ISSUE

Join the volunteer editorial team!
Different ages and levels of involvement are welcome.

E. briz@bricksbristol.org
T. 07709 264 201

We hope you enjoyed this edition of BRIZ. You can find newsletters at local shops and hubs to share around.

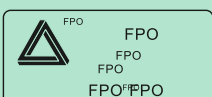
Digital issues are available at bricksbristol.org/2023/04/briz-spring

Could you help support us to continue BRIZ?

Text BRIZ followed by your donation amount for a one off payment to 70580. Example: "BRIZ 10" to donate £10.

Texts will cost the donation amount + one standard network rate message, and will opt you in to hear updates from us. If you would like to donate but don't want to opt in to future updates, please text "BRIZNOINFO 10" to donate £10.

Donations will go towards future issues. If future issues do not continue, they will go into community projects. Thank you!



Printed in Brislington,
on recycled paper
by Taylor Brothers Bristol Ltd

Please recycle responsibly.